

# THE COMMUNITY **COLLABORATIVE**



**COMMUNITY COLLABORATIVE  
DECEMBER 20, 2023**

# Captioners

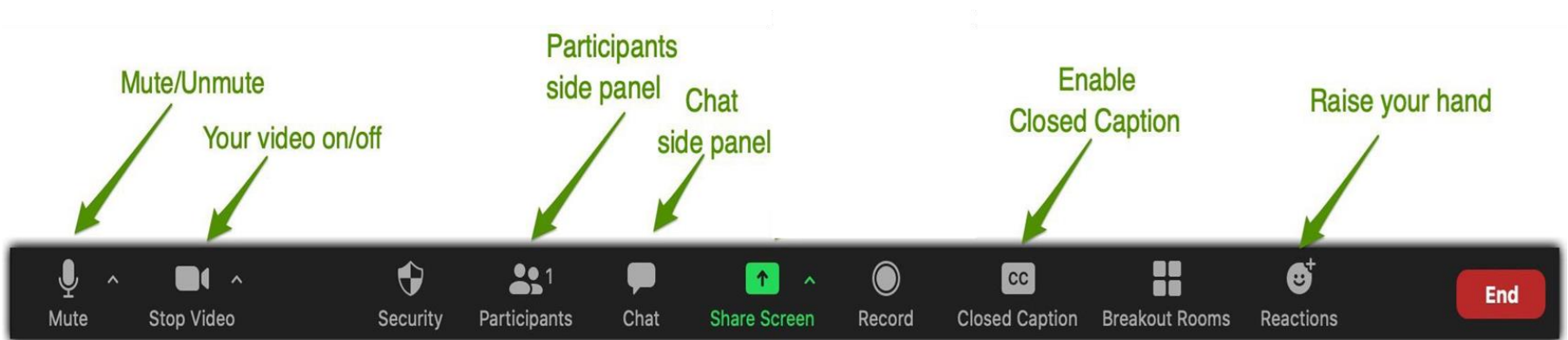
## How to display and customize

---

- To view live captions, click on the menu arrow next to the Closed Caption button.
- Choose from showing subtitles, a full transcript, or both.
- You may adjust the size of the captions if you wish.
- You can also Hide Subtitles if you do not want to see the text.
- Please message Tom – Kauffman and Associates Inc if you have any questions!

# Zoom Navigation and Accessibility

---



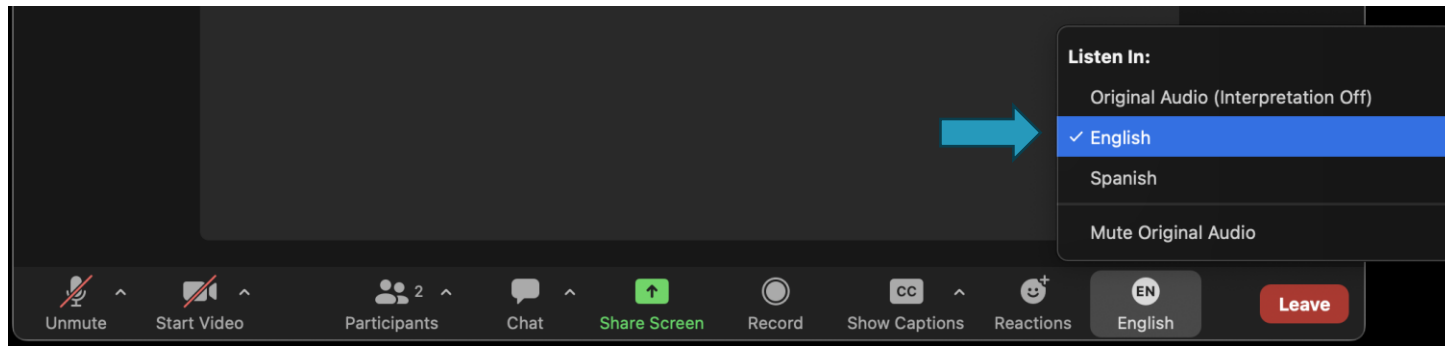
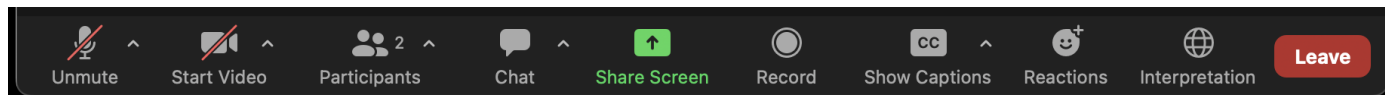
# English/Spanish Translations

English Speakers

1. Select

“Interpretation”

2. Choose English



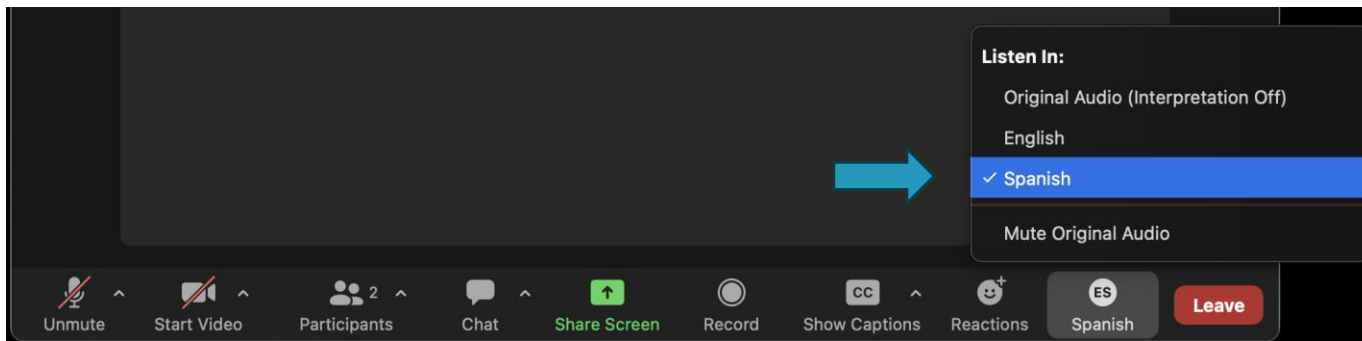
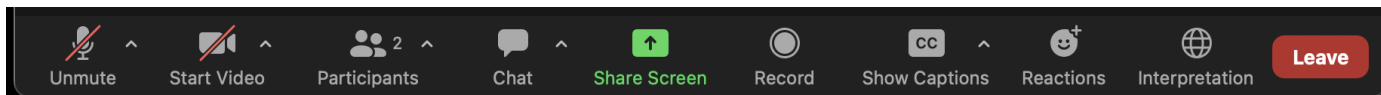
# English/Spanish Translations (cont.)

Spanish Speakers

1. Select

“Interpretation”

2. Choose Spanish



# Agenda

Time	Agenda	Speaker/Lead
3:30 - 3:35 p.m.	Welcome and Introductions  KAI Accessibility Slides	Amelia Bai, <i>Director of Oceania Northwest</i>  Tom Dineen, <i>KAI Tech Support</i>
3:35- 3:40 p.m.	Land & Labor Acknowledgement	Amelia Bai
3:40–3:55 p.m.	Community Relations Briefing: Governor's Proposed 2024 Supplemental Budget	Elizabeth Perez, <i>Chief, Executive Office of Public Affairs and Equity, WA State Department of Health</i>
3:55-4:25 p.m.	Community Collaborative – Year in Review	JanMarie Ward, <i>Senior Public Health Policy &amp; Project Advisor/Consultant, American Indian Health Commission</i>
4:25-4:40 p.m.	Workgroup Highlights	Amelia Bai  Native Hawaiian and Pacific Islander Health Equity Workgroup, Tausilli (Sili) Kalepo, Co-lead, Ala Talo, Co-lead  Carceral Health Equity Workgroup, Cyril Waldron, Co-lead  Disability-Access and Functional Needs Workgroup, Todd Holloway, Co-lead
4:40– 4:55 p.m.	A Conversation: Thought Partner & Community Collaborative Reflections	JanMarie Ward
4:55-5:00 p.m.	Closing	Amelia Bai

# Land & Labor Acknowledgement Part 1

---

The Community Collaborative would like to acknowledge that we are currently living on the traditional territories of Coast Salish people and other Native peoples who have lived here for many generations and who continue to be systematically erased by policies and practices that remove their histories from this place. We acknowledge and honor the sovereignty of Indigenous peoples in the North America and in the Island Territories of the United States over their languages, cultures and lands and will collectively labor to center Indigenous humanity and their continued struggles for justice in stewarding the health and wellness of their communities.

# Land & Labor Acknowledgement Part 2

---

We also would like to acknowledge this country has been made possible by the labor of enslaved African peoples and their descendants who suffered the horror of trafficking, slavery, Jim Crow, imprisonment, police brutalities and many other harms we continue to see today through anti-Black sentiment. We recognize the history of Washington state as complicit with the racist ideology of White supremacy. They persist in present-day racial realities privileging Whites while oppressing BIPOC communities. We are committed to uplifting the voices, experiences and histories of Indigenous people and descendants of enslaved people's contributions.



# Community Relations Briefing: Governor's Proposed 2024 Supplemental Budget

---

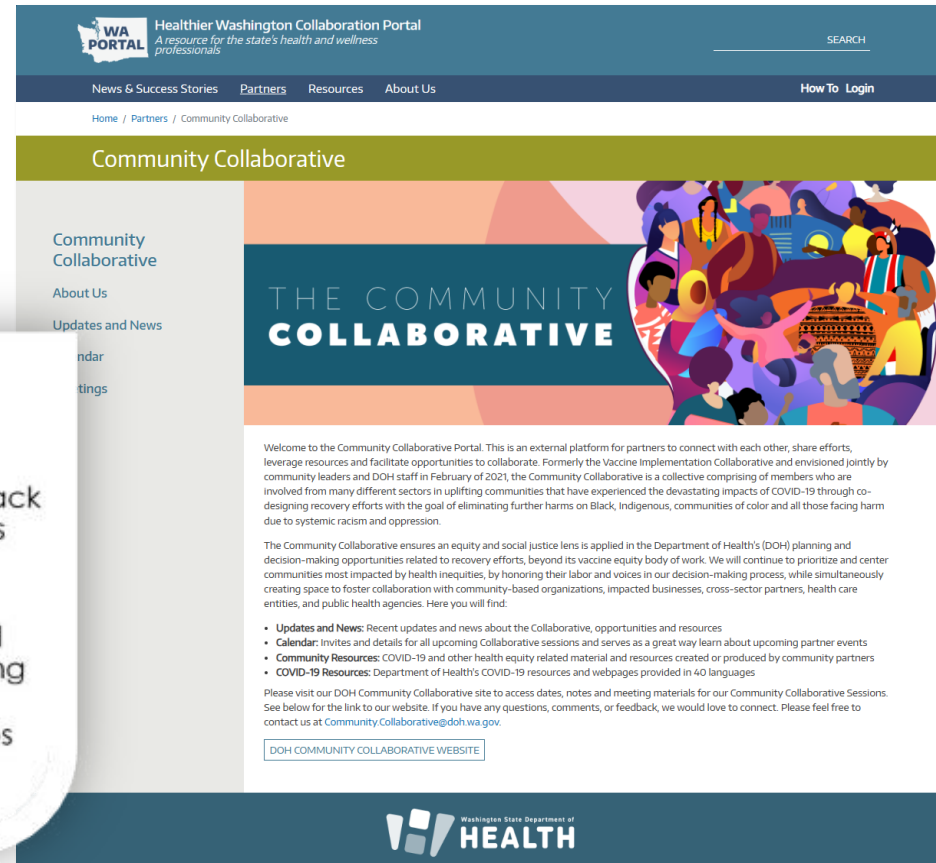
Elizabeth Perez, Chief, Executive Office of Public Affairs and  
Equity, WA State Department of Health



# Community Collaborative - Year in Review

# A Pause and Transitions

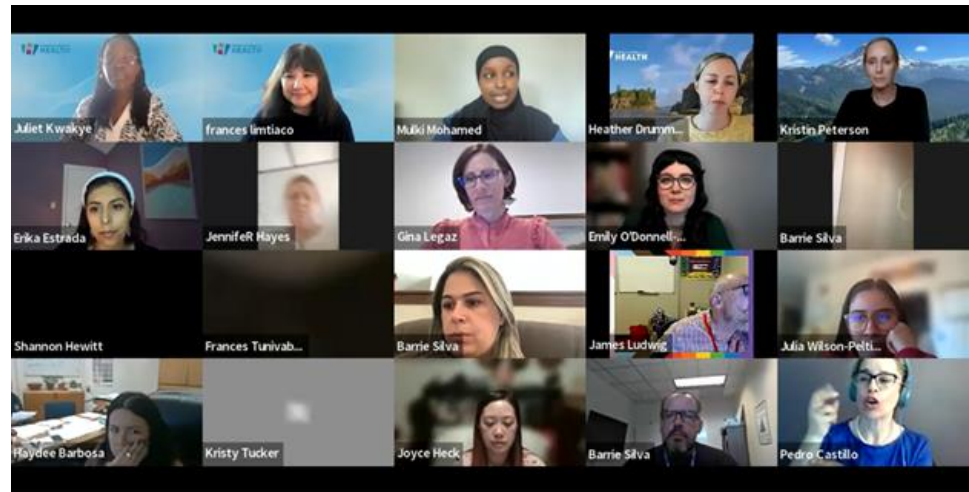
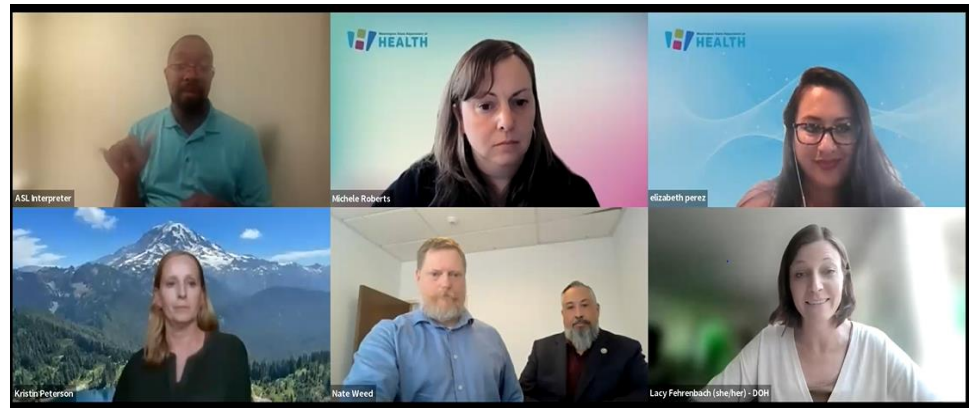
- A new name and broadening of focus
- Strengthening of internal infrastructure and sustainability



[Community Collaborative | Healthier Washington Collaboration Portal \(waportal.org\)](https://waportal.org)

# Community Relations Briefings

- End of the COVID-19 Public Health Emergency and Engagement with Leadership
- Long COVID-19
- National Preparedness Month: Community Preparedness
- COVID-19 Vaccine Program Updates and Changing Landscape of COVID-19 Vaccines
- Respiratory Virus Vaccine Season and Immunization Updates



# HEAL Act and Environmental Justice

STATE AGENCY IMPLEMENTATION OF THE HEAL ACT



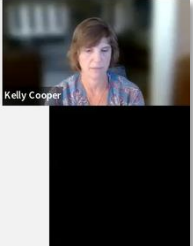
Washington State Department of Health | 23

# Pro-Equity and Anti-Racism (PEAR)

---



# DOH Proposed Legislative Decision Packages and Agency Request Legislation



## Preliminary Decision Package Proposals

- **Care-A-Van**
- Outward-facing media campaign
- **Adult immunizations**
- **Sustaining our Care Connect Washington program**
- **Implementing PEAR (Pro-Equity Anti-Racism) initiative and community compensation**
- **Health Equity Zones (HEZ) grant initiative**
- Investments in Information Technology, including Informatics & Public Health Technology
- Investments in our Healthcare Enforcement and Licensing Management System (HELMS)

12

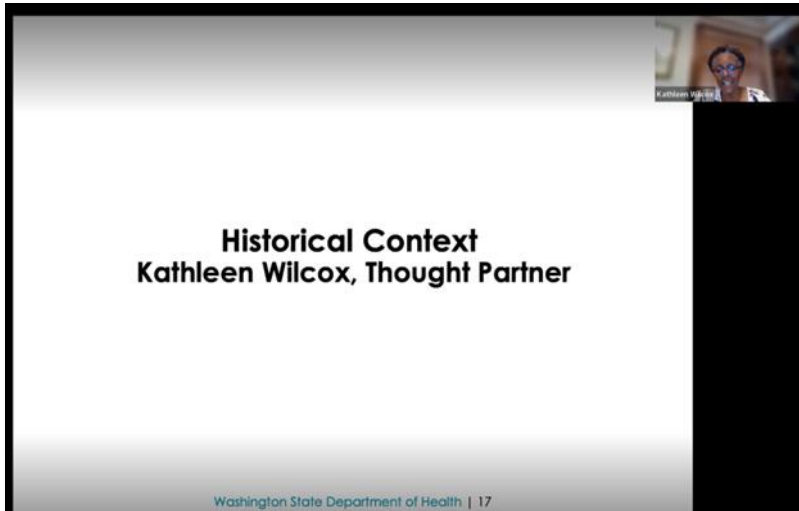


## Timeline 2024 Session

- DOH develops budget requests and legislative agenda May through July 2023
- **DOH engages community and partners throughout August 2023**
- DOH holds partner webinar on August 28<sup>th</sup>, 2023
- DOH's 2024 proposals are due to the Governor's Office on September 13<sup>th</sup>, 2023
- 2024 Legislative Session begins on January 8<sup>th</sup>, 2024
- End of Legislative Session is March 7<sup>th</sup>, 2024

10

# Diversity in Clinical Trials



**Historical Context**  
Kathleen Wilcox, Thought Partner

Washington State Department of Health | 17



**2SHB 1745: IMPROVING DIVERSITY  
IN CLINICAL TRIALS**



Washington State Department of Health

H-1486.1

**SECOND SUBSTITUTE HOUSE BILL 1745**

**State of Washington      68th Legislature      2023 Regular Session**

**By House Appropriations** (originally sponsored by Representatives Thai, Duerr, Doglio, Ormsby, and Macri)

READ FIRST TIME 02/24/23.

1      AN ACT Relating to improving diversity in clinical trials;  
2 amending RCW 43.348.040; reenacting and amending RCW 43.348.010;  
3 adding a new section to chapter 28B.20 RCW; adding a new section to  
4 chapter 28B.30 RCW; adding a new section to chapter 70.41 RCW; adding  
5 a new chapter to Title 69 RCW; and creating a new section.

6 BE IT ENACTED BY THE LEGISLATURE OF THE STATE OF WASHINGTON:

7      **Sec. 1.** RCW 43.348.010 and 2018 c 4 s 1 are each reenacted and  
8 amended to read as follows:

9      The definitions in this section apply throughout this chapter  
10 unless the context clearly requires otherwise.

11      (1) "Board" means the governing board of the endowment.

12      (2) "Cancer" means a group of diseases involving unregulated cell  
13 growth.

14      (3) "Cancer patient advocacy organizations" means groups with  
15 offices in the state that promote cancer prevention and advocate on  
16 behalf of cancer patients.

17      (4) "Cancer research" means advanced and applied research and  
18 development relating to the causes, prevention, and diagnosis of  
19 cancer and care of cancer patients including the development of  
20 tests, genetic analysis, medications, processes, services, and  
21 technologies to optimize cancer therapies and their manufacture and

p. 1

2SHB 1745



# DOH Transformational Plan

## OUR PRIORITIES AND VISION FOR TRANSFORMATIONAL HEALTH



### I. HEALTH AND WELLNESS

All Washingtonians have the opportunity to attain their full potential of physical, mental, and social health and well-being.



### II. HEALTH SYSTEMS AND WORKFORCE TRANSFORMATION

All Washingtonians are well served by a health ecosystem that is robust and responsive, while promoting transparency, equity, and trust.



### III. ENVIRONMENTAL HEALTH

All Washingtonians will thrive in a broad range of healthy environments — natural, built, and social.



### IV. EMERGENCY RESPONSE AND RESILIENCE

All Washington communities have the information and resources they need to build resilience in the face of myriad public health threats and are well-positioned to prepare for, respond to, and recover from emergencies and natural disasters.



### V. GLOBAL AND ONE HEALTH

All Washingtonians live in ever-connected environments that recognize and leverage the intersection of both global and domestic health as well as the connections of humans, animals, and the environment.

## TRANSFORMATIONS IN ACTION



INNOVATION AND TECHNOLOGY



COMMUNITY CENTERED



VISIBILITY AND VALUE



EQUITY DRIVEN



COLLABORATIVE ENGAGEMENT

WASHINGTON STATE DEPARTMENT OF HEALTH  
**TRANSFORMATIONAL PLAN**  
A VISION FOR HEALTH IN WASHINGTON STATE

- Shares our findings after a **year-long process of engagement** both internally and externally
- Draws on **in-person and virtual convenings on COVID-19, healing, hope, and health for all**
- Includes an **extensive review of DOH programs and activities** as well as **emerging national themes in public health practice**
- Builds upon **Governor Inslee's January 2021 challenge to "reimagine public health"**
- Names **five Transformational Priorities** and a **commitment to six actions for each priority**
- Uses an **"Equity, Innovation, and Engagement"** frame and **3V's of Public Health Visibility, Value, and Validation**

HEALTH

@WaDepHHealth  
@WaHealthSec  
@lshamnd

# Community Driven Outreach

## COMMUNITY-DRIVEN OUTREACH CONTRACTORS/PART

 APARTNERSHIP

 ASIA PACIFIC CULTURAL CENTER

 CENTRO CULTURAL MEXICANO


 CENTER FOR MULTICULTURAL HEALTH

 COMAGINE HEALTH

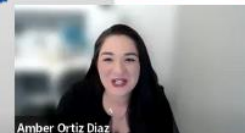
 Desautel Hege (DH)

 Health Commons Project

 Momentum Professional Strategy Partners

 Refugee and Immigrant Services Northwest (RISNW)

 Yakima Valley Community Foundation (YVCF)



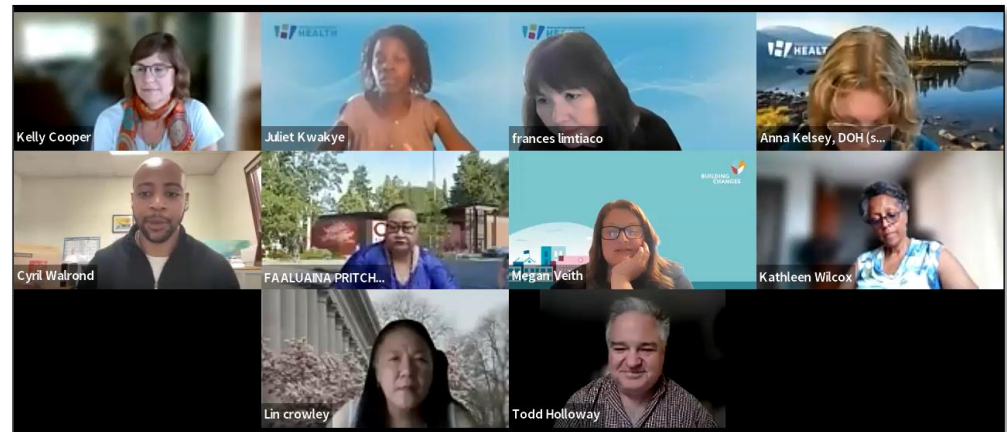
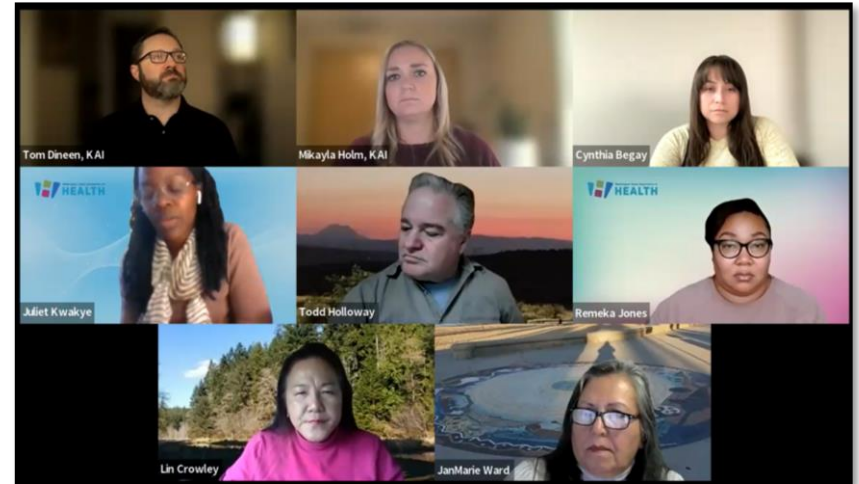
# Thought Partners

- Chapbook and COVID-19 Insight Report
- DOH Community Compensation Guidelines
- Equitable rulemaking in health systems and quality assurance
- Adhoc planning meetings with DOH on 2SHB 1745
- Legislative Partner webinar
- Feedback on DOH funding opportunities – environmental justice assessment pilots



# Thought Partners

- Building Community Capacity for Equitable COVID-19 Recovery Funding Opportunity Review Committee
- Novel and emerging practices evaluation study on equitable funding methodology
- DOH Daily Profiles and Public Health Spotlights
- Drinking Water State Revolving Fund Rulemaking
- DOH Employee Interview Committees
- Community Collaborative Assessment



# Thought Partners

- Raising awareness
  - Independent living movement
  - Carceral health equity
  - Connections with other Organizations

Defining Disability- Access Functional Needs

Todd Holloway  
Senior Independent Living Advocate for the Center for Independence  
Thought Partner for the Community Collaborative

## CAN A BROTHA HEAL?

A COMMUNITY CONVERSATION

29 NOV 1:00 PM - 2:15 PM  
Via Zoom

FOR REGISTRATION AND FURTHER INFORMATION:  
[www.elevateblackwellness.com](http://www.elevateblackwellness.com)

MOMENTUM PROFESSIONAL STRATEGY PARTNERS  
TherapyFund FOUNDATION  
ELEVATE BLACK WELLNESS Our Health, Our Future  
VOCAL WASHINGTON

Cyril Walrond

**SPEAKER**

Cyril Walrond is the Outreach & Advocacy Manager for RECLAIM (formerly University Beyond Bars). In addition to being a partner, son, grandson, brother, uncle, and friend, he is a beacon of inspiration in the pursuit of justice, building community power, and promoting community healing.

29 NOV 1:00 PM - 2:15 PM  
Via Zoom

## Center for Independent Living

**What is a Center for Independent Living (CIL)?**

Centers are non-profit organizations which assist people with disabilities who want to increase personal freedom and live more independently. CILs are staffed by people with disabilities within the communities they serve. They assist people with all types of disabilities.

**How Do CILs Assist People?**

CIL Services are peer driven - people with disabilities assisting other people with disabilities as mentors, and partners. Each Center is unique because it offers services based upon the particular needs of its community. At the same time, Centers are alike in that they all offer these services: Information and Referral, Peer Support, Individual and Community Advocacy, and Independent Living Skills Training.

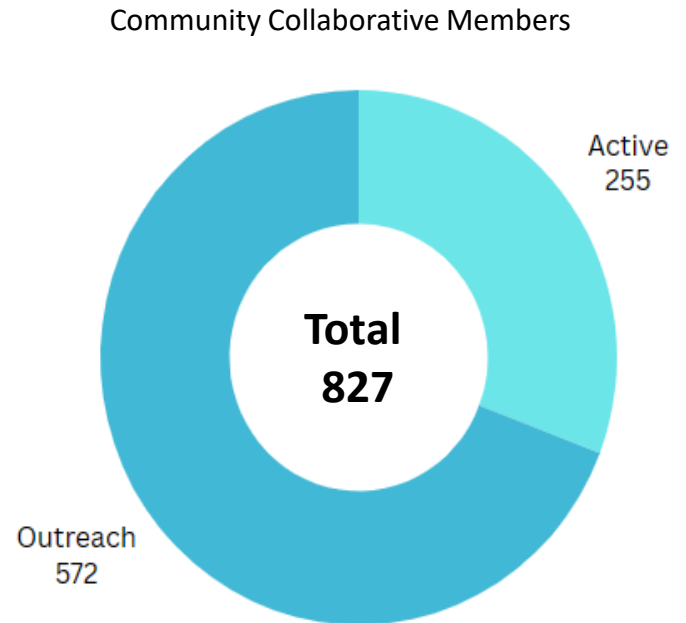
BLACK PRISONERS CAUCUS  
BUILDING POSITIVE COMMUNITIES

## Black Prisoner's Caucus Highlight

# Membership

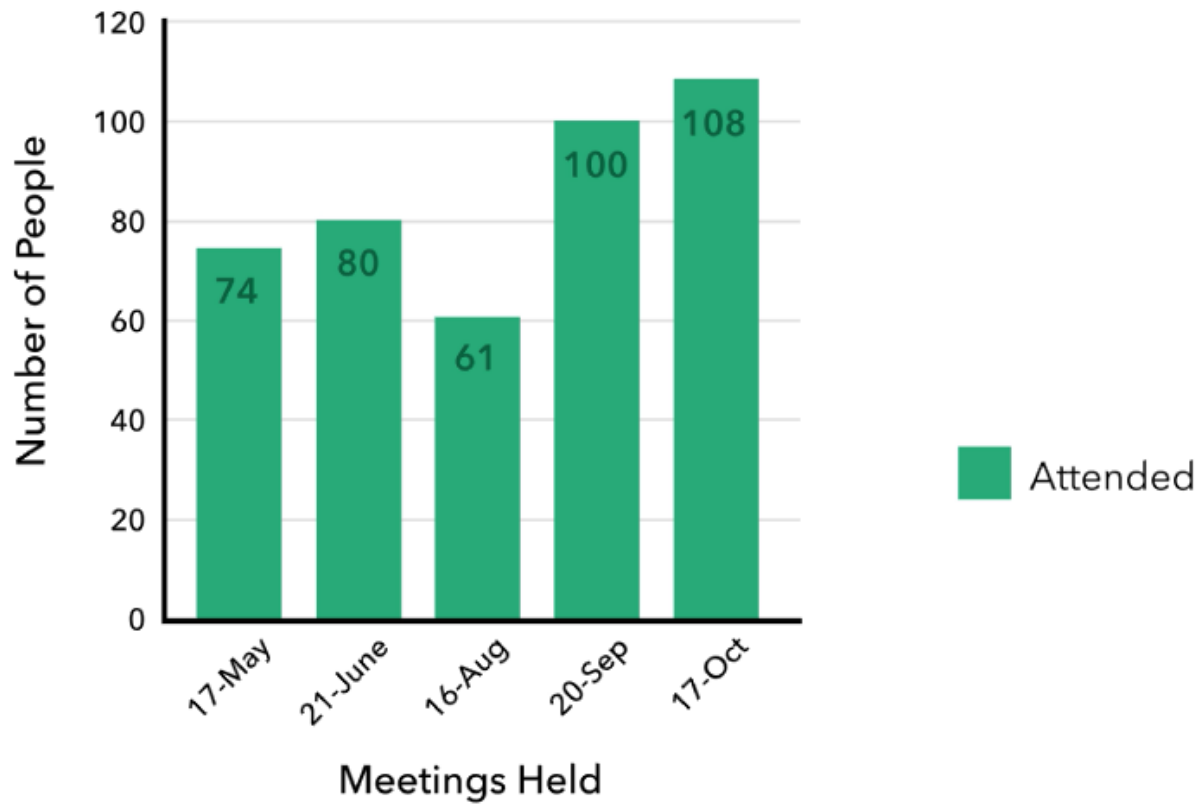
---

- 255 Active Community Collaborative Members
- Total of 827 Community Collaborative members
- Outreach in October 2023
  - 572 Community Collaborative individuals have been contacted generating continued interest and involvement.



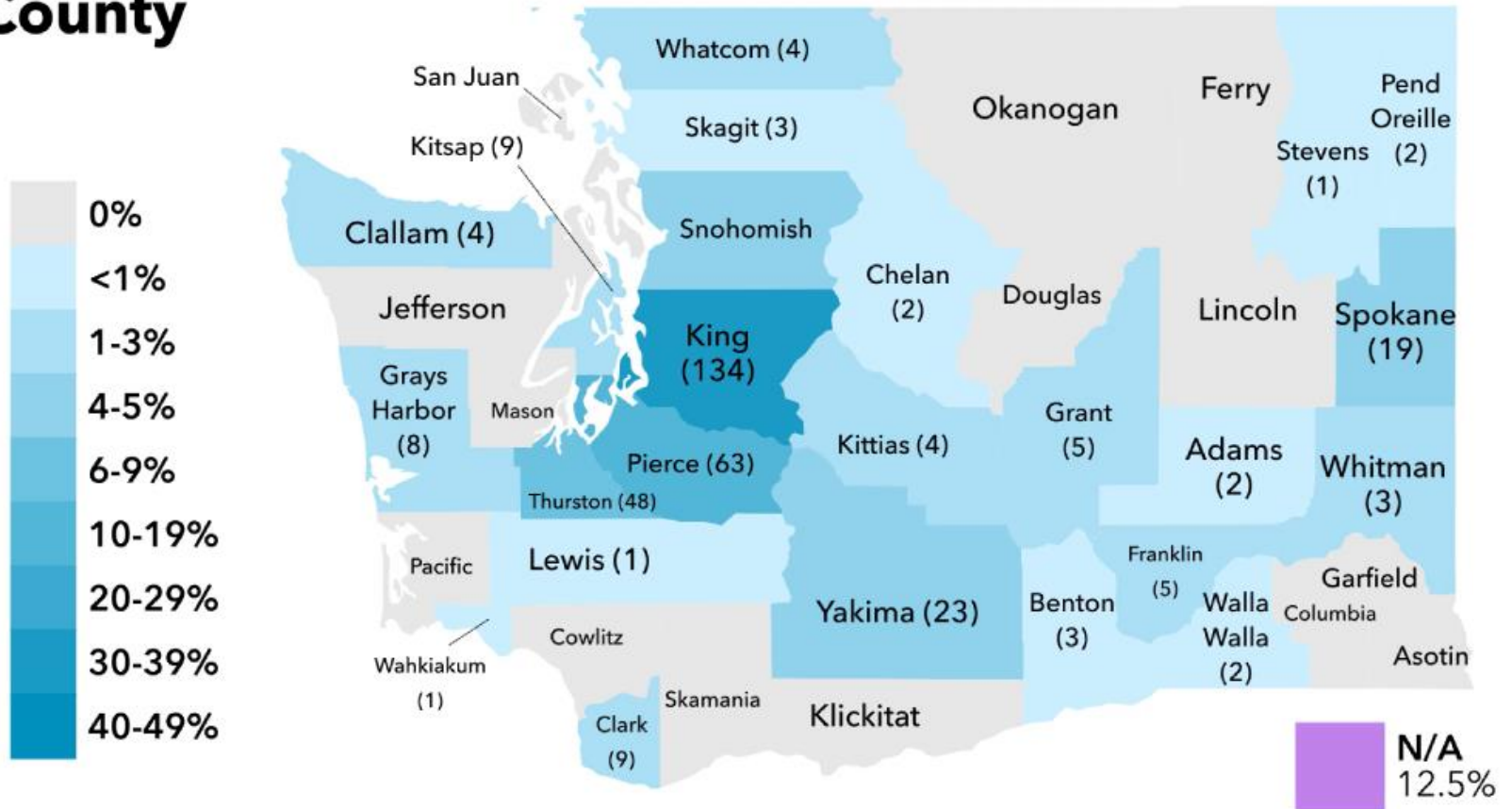
# Attendance

## Community Collaborative Session



# Geographic Representation

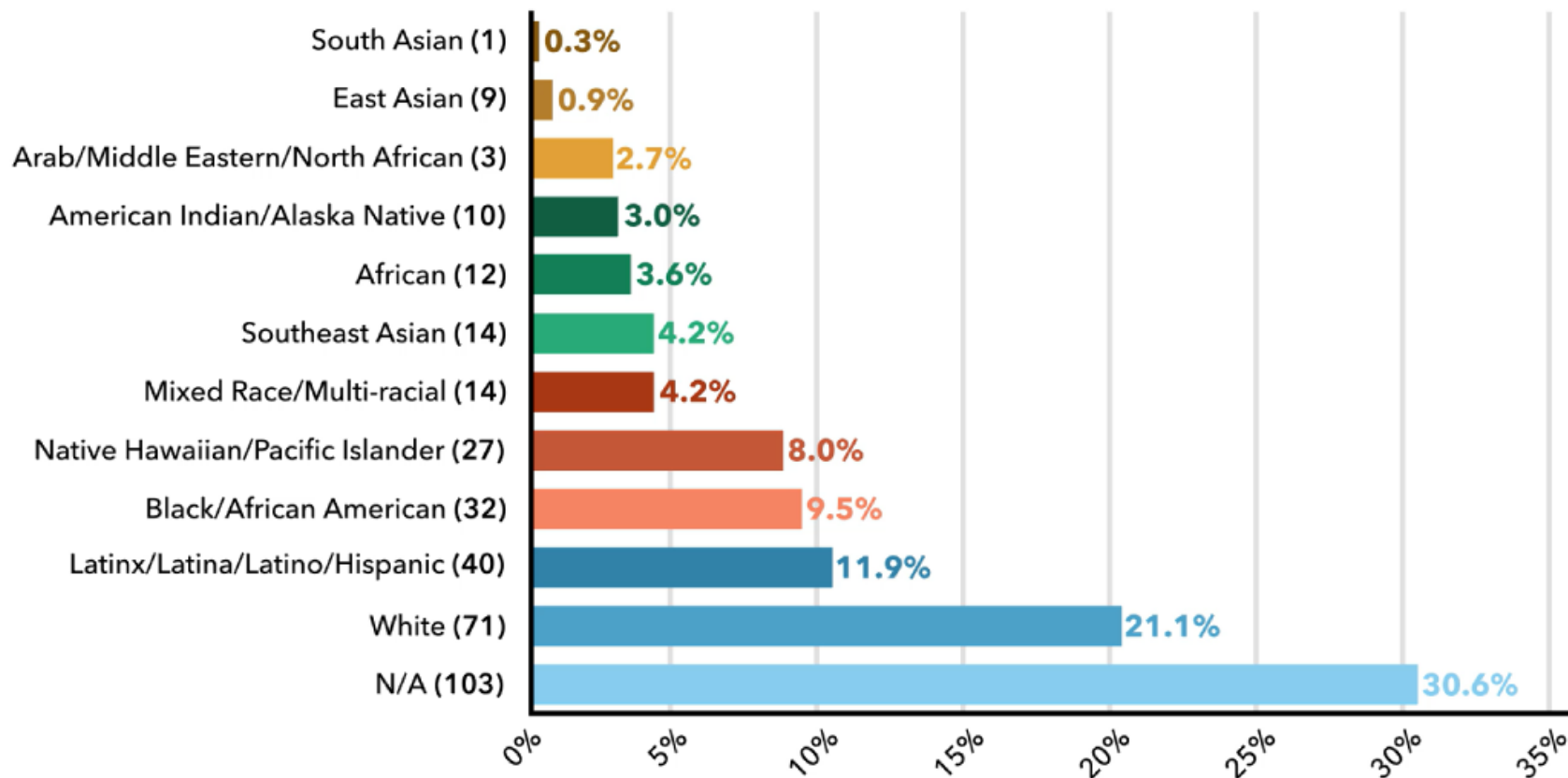
## County





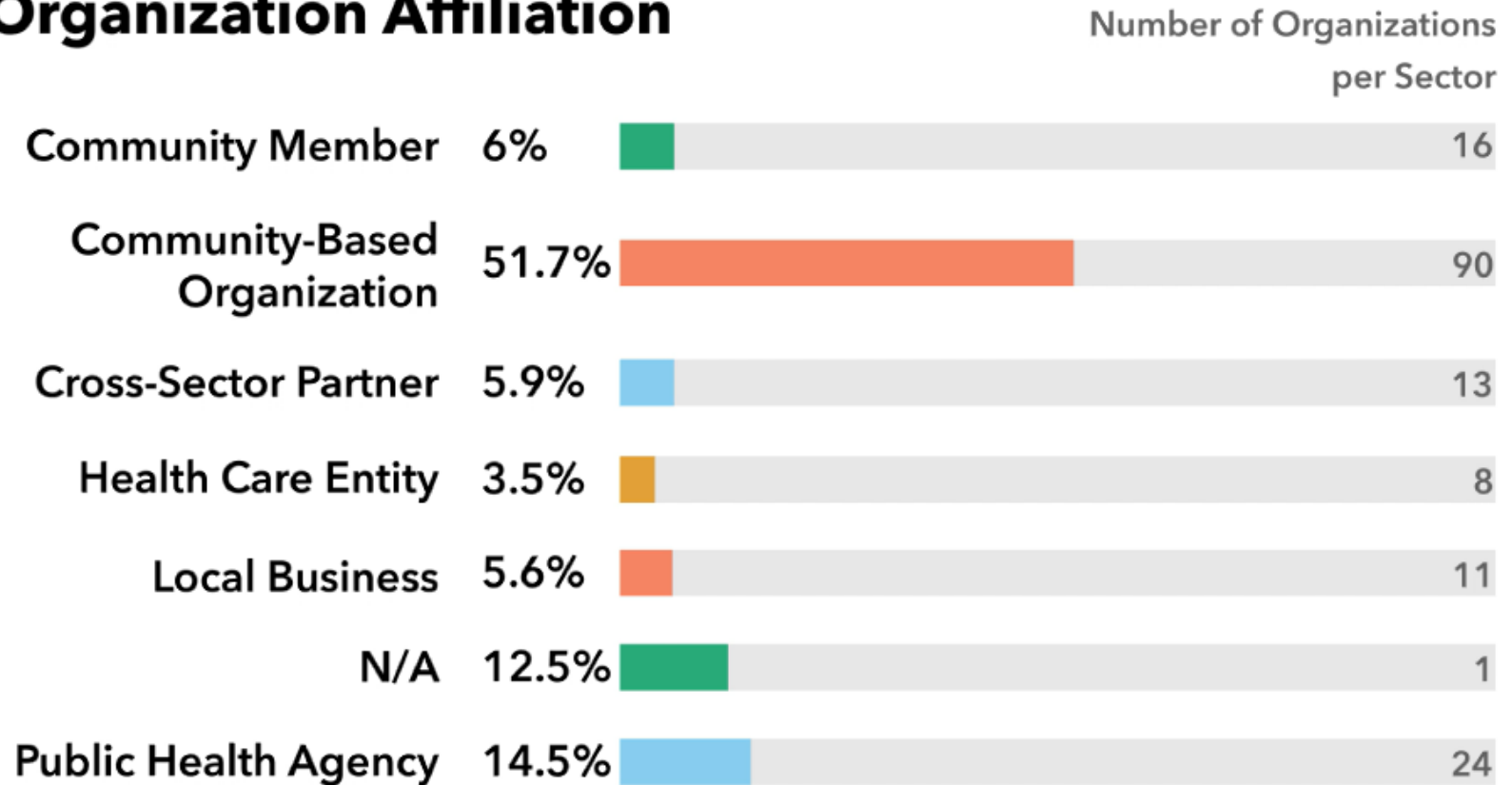
# Attendance by Self-Identified Race/Ethnicity

## Race / Ethnicity



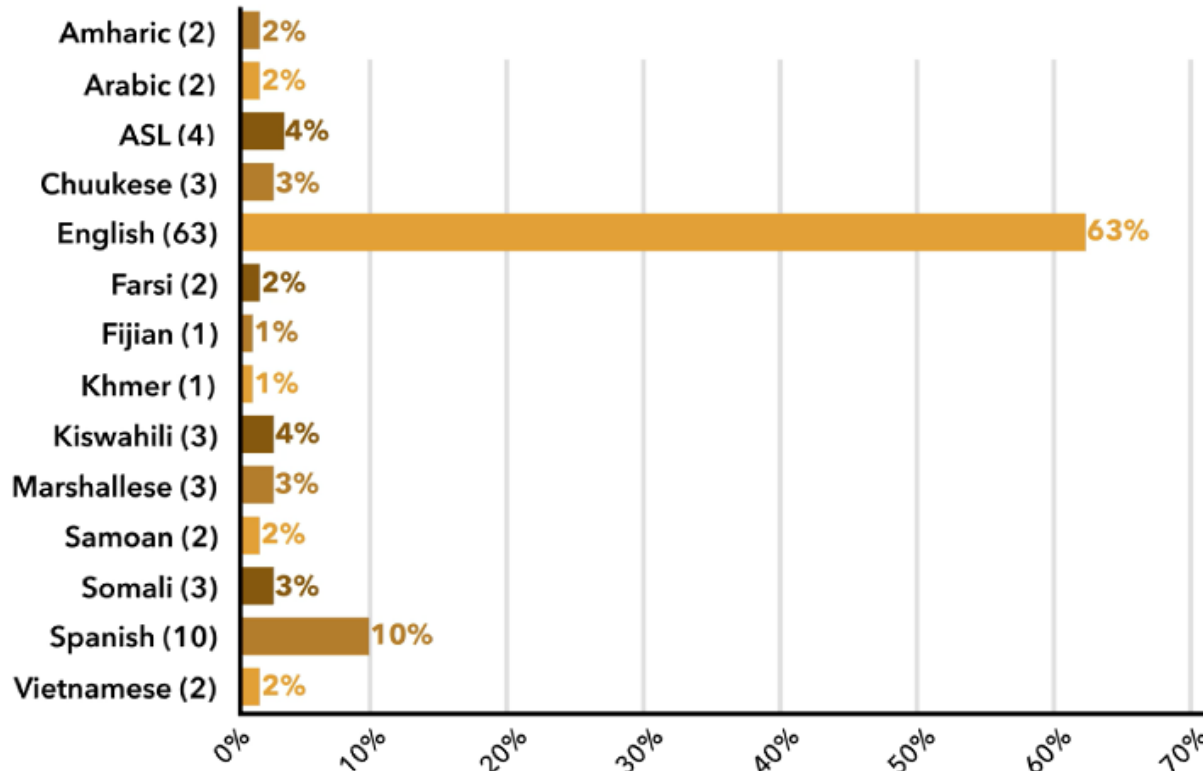
# Sector Representation

## Organization Affiliation



# Languages of Attendees

## Primary Languages

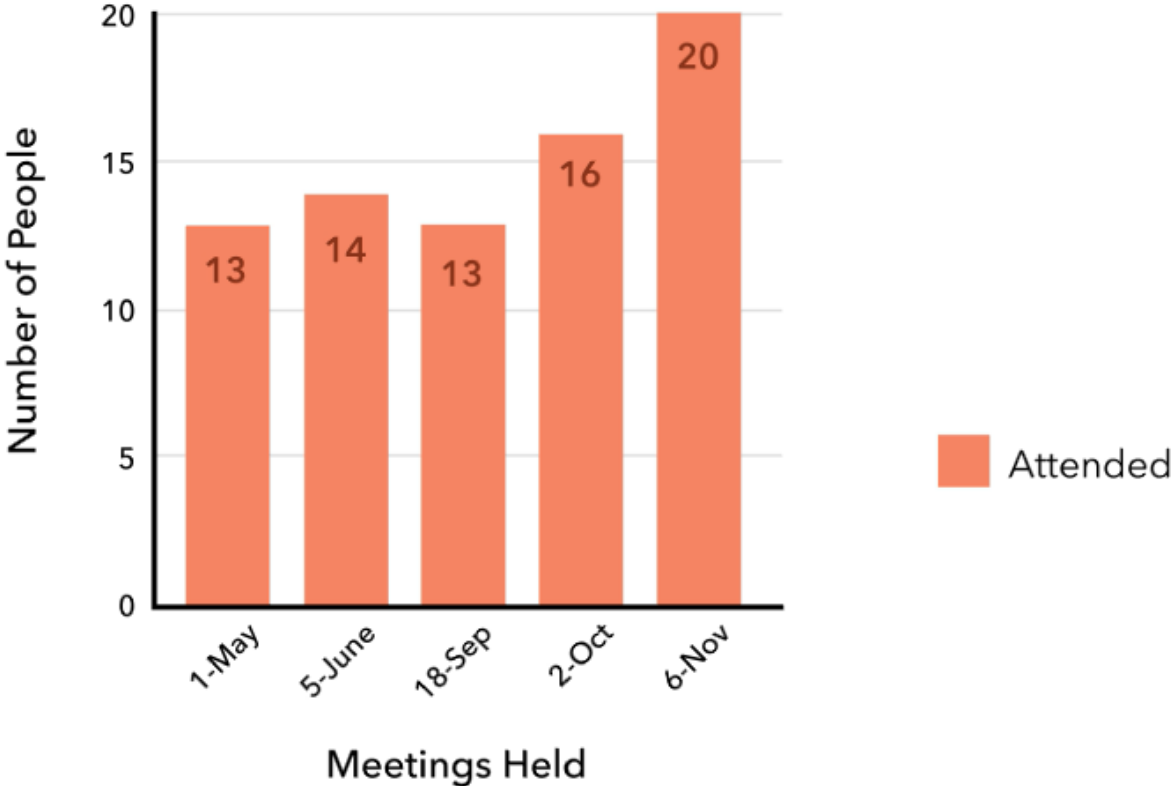


Translations provided: ASL, English, Korean, Mandarin, Portuguese, Russian, Spanish, and Vietnamese.

# Workgroup Highlights

# Native Hawaiian/Pacific Islander Health Equity Workgroup

## Native Hawaiian / Pacific Islander Health Equity Group



# Native Hawaiian / Pacific Islander Health Equity Workgroup

## **Workgroup Leads:**

- Ala Talo, Co-lead
- Tausili Kalepo, Co-lead

## **Meeting Occurrence (on pause):**

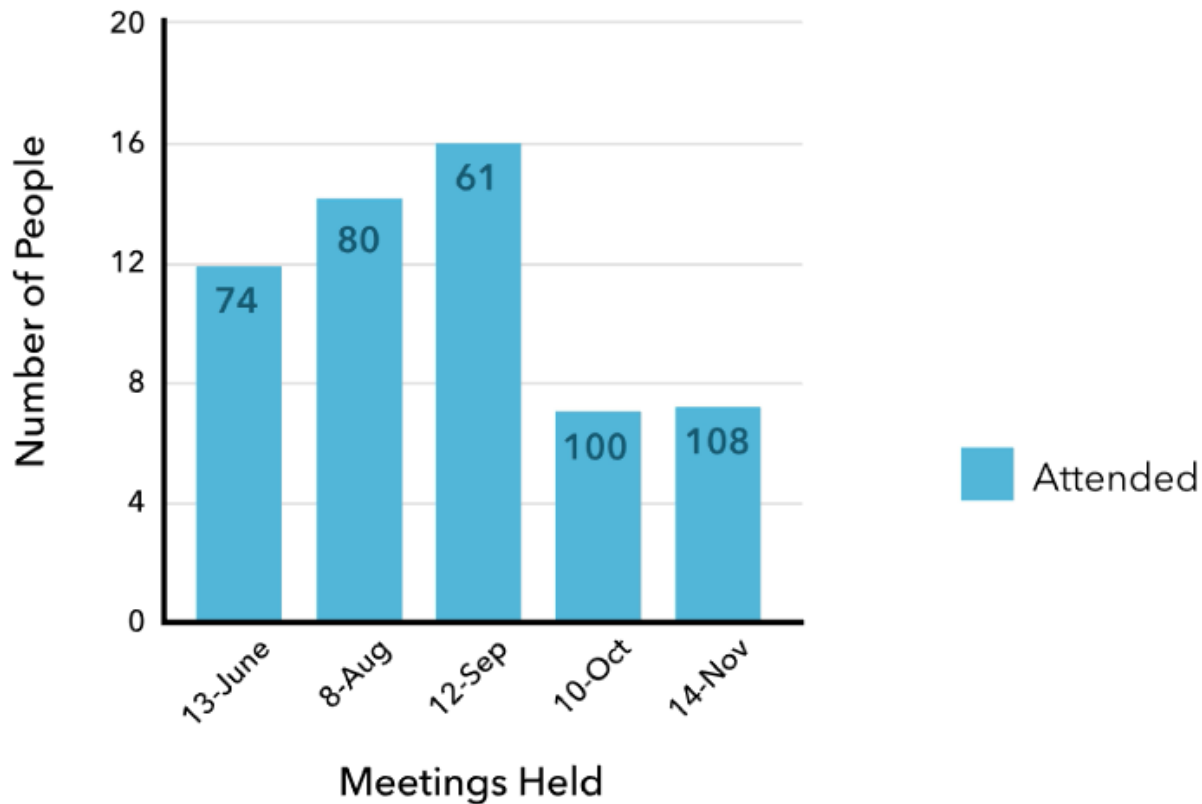
- First Monday of each month 3:30-5 p.m.

## **Workgroup Highlights:**

- Policy priorities of the Pacific Islanders
- Work moving forward

# Carceral Health Equity Workgroup

## Carceral Health Equity Workgroup



# Carceral Health Equity Workgroup

---

## **Workgroup Leads:**

- Cyril Walrond, Co-lead
- Omid Bagheri Garakani, DOH

## **Meeting Occurrence:**

- Second Tuesday of each month 3:00 – 5 p.m.

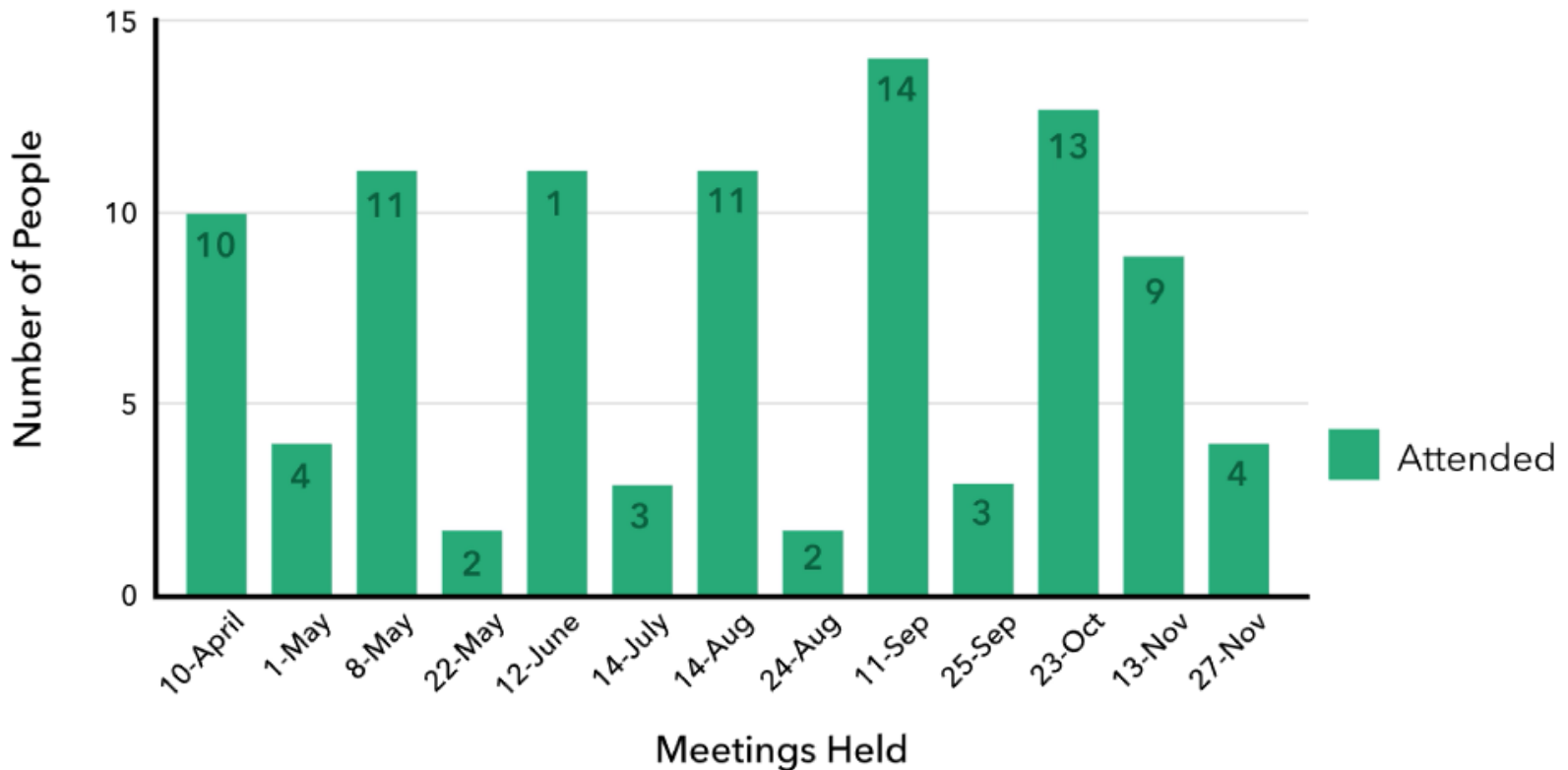
## **Workgroup Highlights:**

- New workgroup established focused on the health harms of carceral system
- Engagement between community partners and the DOH staff leading new work implementing HB 1470



# Access Functional Needs Disability Partner Workgroup

## Access Functional Needs Disability Partner Workgroup



# Access Functional Needs Disability Partner Workgroup

## Workgroup Leads:

- Todd Holloway, Co-lead
- Yen Baynes, DOH
- Tara Bostock, DOH

## Meeting Occurrence:

- Second Monday of each month 4:30-6 p.m.
- Fourth Monday of each month 4:30-5:30 p.m.

## Workgroup Highlights:

- Presented an overview of the Independent Living Movement.
- Dean Sydnor from Hopelink's RARET group, reported on the outcomes of an Emergency Transportation Provider Network (ETPN) tabletop exercise.
- D-AFN workgroup is expanding plans for engagement and recruitment inclusion in 2024.

Thought Partner &  
Community Collaborative Reflections &  
Discussion

---

# Closing

---

# WA Portal Meeting Minutes and Notes

---

- Previous notes and presentation
  - On the main page, select the Meetings tab
  - Notes will be posted on the WA Portal within two weeks after the Community Collaborative Session
- If you have any questions or concerns, please reach out to:  
[community.collaborative@doh.wa.gov](mailto:community.collaborative@doh.wa.gov)



**Healthier Washington Collaboration Portal**  
*A resource for the state's health and wellness professionals*

# Community Collaborative Contact Information

---

For any questions, comments, or feedback, please contact us at [community.collaborative@doh.wa.gov](mailto:community.collaborative@doh.wa.gov)

## **Additional Contact Information**

- Juliet Kwakye, Equity and Social Justice Strategist  
Email: [Juliet.Kwakye@doh.wa.gov](mailto:Juliet.Kwakye@doh.wa.gov)
- Frances Limtiaco, Community Investments and Engagement Manager  
Email: [Frances.Limtiaco@doh.wa.gov](mailto:Frances.Limtiaco@doh.wa.gov)

Please visit our [DOH Community Collaborative](#) site to access dates, notes and meeting materials for our Community Collaborative Sessions



To request this document in another format, call 1-800-525-0127. Deaf or hard of hearing customers, please call 711 (Washington Relay) or email [civil.rights@doh.wa.gov](mailto:civil.rights@doh.wa.gov).